

———— THE —————
GEOLOGICAL SOCIETY
— OF —
GLASGOW

Registered Scottish Charity No. SC007013

President: Dr Brian Bell BSc (Hons) PhD

www.geologyglasgow.org.uk

Newsletter 156/4 - April 2014



A 16.5g gold nugget from near Tyndrum. See article on *Scottish Gold* by Neil Clarke on page 4

In this Newsletter:

- ❖ *Lecture meeting for April*
- ❖ *Members' Night 15th May – call for contributions*
- ❖ *Scottish Gold – new exhibition at the Hunterian Museum*
- ❖ *Tips for Ticks – health advice for field trips*
- ❖ *Membership subscription news*

Lecture meetings:

All lectures are held in the *Gregory Building, University of Glasgow, Lilybank Gardens, Glasgow G12 8QQ*. Meetings commence at 7.30 pm.

Thursday 10th April

Dr Simon Passey (University of Cambridge)

Continental flood basalts of the Faroe Islands and the opening of the North Atlantic

The Paleogene Faroe Islands Basalt Group (FIBG) comprises four eruptive sequences or formations, emplaced in a dominantly subaerial environment during the development of the extensive continental flood basalt province that stretches from East Greenland through the Faroe Islands and into the Faroe-Shetland Basin. The Lopra and Beinivørð formations consist of lava-fed hyaloclastite deltas and fissure-fed simple lava flows that represent the filling and levelling of the pre-existing irregular topography and the progradation of the lava field basinward. A regional hiatus in the lava flow volcanism is marked by Prestfjall Formation consisting of coals and sandstones deposited in mainly lake and swamp environments. Volcanism resumed with airfall tuffs of the Hvannahagi Formation that were subsequently reworked by rivers and mass flows and deposited in localised basins. Lava flow volcanism resumed with the point-sourced shield volcanoes of the Malinstindur Formation consisting of compound lava flows. The final phase of volcanism recorded on the islands is the Enni Formation that consists of a mixture of shield volcanoes and simple flows that tend to fill the accommodation space between the volcanoes. The Malinstindur and Enni formations are punctuated by sedimentary deposits marking pauses in the volcanism, aiding regional correlations and helping to understand the volcanic evolution prior to and during the opening of the North Atlantic Ocean.

*At this meeting we will also have a very brief 'Special General Meeting' before the lecture to vote on the adoption of an **Independent Examiner** of the Society's financial accounts. We are pleased to let you know that we now have a temporary candidate to run for this Session (156) only. This is an important post for the Society's obligations as a registered Charity, so we will be especially pleased to see a good attendance of members at this meeting.*

Thursday 15th May

Members' Night

Short presentations by members of the Society

Member's Night is an opportunity for Society members to give short presentations or displays about their own interests and adventures in geology. Members have the option of the following modes of presentation:

- 15 minute oral presentation
- Bench display (specimens, photographs, books etc.)
- Poster (up to A1 size)
- "Kiosk" style slideshow or video on member's own laptop

Once again this year we will be limiting spoken presentations to four 15 minute talks, so please consider carefully whether your presentation might be better suited by one of the other modes listed above. A **presentation request form** is appended to the end of this Newsletter. Requests should reach the Hon Secretary, Simon Cuthbert, by surface mail or e-mail no later than Thursday 24th April. In the event that the number of requests for talks exceeds four, the choice of speakers will be at the discretion of Council in the interests of a balanced and diverse programme, and to give opportunities to those who have not presented in recent years. *NB the date of Members' Night has been changed from the originally advertised date of 8th May to Thursday 15th May.*

Summer Excursion Programme:

There are some places left on the Saturday and residential excursions:

Saturday 12th April - *Cononish Gold mine near Tyndrum and Glen Orchy*

Saturday 21st June - *Pentland Hills Regional Park*

Saturday 5th July - *East coast – Anstruther to Cellardyke*

Saturday 19th July - *'Rock Around' + Building Stones of the University of Glasgow*

Saturday 9th August - *Field skills day at Loch Ardsinning*

Saturday 23rd August - *Schiehallion and Strath Fionan*

Fri 12th to Mon 15th Sept. - *Banffshire Coastal Section – from Findochty to Fraserburgh*

Full details and a booking form can be found in Newsletter 156/3 and on the Society website <http://geologyglasgow.org.uk/excursions/>.

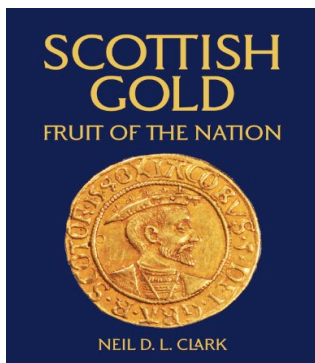
Maggie Donnelly, Day Excursion Secretary

daytrips@gsocg.org

Topical articles:

Scottish Gold

The Hunterian Art Gallery 14th March – 15th June 2014



*Book written by Dr Neil Clark of
the Society for the exhibition
(£14.99)*

Since March this year, the Hunterian has been hosting an exhibition celebrating Scottish gold. The exhibition examines everything from the natural history of gold, its prehistory in Scotland, medieval history, the two Scottish gold rushes, as well as the more recent commercial and leisure exploitation in the rolling hills of the Southern Uplands, the Trossachs, and the Northern Highlands.

Gold has been an important part of Scottish heritage for millennia and this wide-ranging exhibition, and its accompanying book, is a glittering look at gold in Scotland held in collections around Britain. From prehistoric ornaments, including a hoard of Iron Age torcs re-assembled for the first time since its discovery 150 years ago, to treasures of Robert the Bruce, Mary Queen of Scots, Charles I, Queen

Victoria, goldsmiths old and new, the story of Scotland's developing wealth is told through these alluring objects.

In the 16th and 17th centuries, Scotland was a big producer of gold coming mainly from the Southern Uplands. Nuggets weighing up to 1kg in weight were recorded in the 17th century but sadly, none survive today having been melted for coinage and jewellery. The majority of the largest existing nuggets were found in the 19th century and later and some can be seen in the exhibition. One of the largest, weighing around 41g, is the 'Martin Nugget' found at Wanlockhead by 'a girl' but was later sold to a Dr Martin after whom the nugget is named.

In the 19th century, Scotland was gripped by the global phenomenon of the gold rushes. Stories brought back from Australasia and North America told of riches beyond the wildest dreams of those left to toil in Scotland for very little reward. It is not surprising, therefore, that on the first mention of gold from the hills of Fife in 1852 that tools were downed and thousands headed for the hills with little knowledge of how to find gold or even what they were looking for. Many exhausted prospectors



*Gold panned from the
Shortcleugh Water in the
Leadhills.*

brought back lumps of pyrite expecting to be paid the equivalent of at least a year's wages, but were paid nothing for their trouble. This was called the "Fools' Gold Rush".



A recently discovered 16.5g nugget from near Tyndrum found by Leon Kirk.

In 1869, when many experienced prospectors had returned home from Australia and California, a new gold rush began in Sutherland on the Kildonan Burn near Helmsdale. This was more successful, but lasted only a year. Since then, gold prospecting has been a popular pastime. Mining companies have also shown interest in some of Scotland's gold-rich ores and it would appear that there will be a golden future for Scotland and the exhibition at the Hunterian is only a beginning.

Members of the Glasgow Geological Society are welcome to visit the exhibition at 50% of the full £5 admission fee. Please make sure you have your membership cards with you.

Neil Clark
Curator of Palaeontology, Hunterian Museum, Glasgow

TEN TIPS FOR TICK ATTACKS

from Seonaid Leishman

The 2014 field excursion season has arrived and so has the season for ticks!



Here in the 'tick box' below are a few tips gathered from some members of the Society who've had recent experience of suffering severe blistering from the bites, and more seriously, Lyme disease itself. A friend of mine spent some months in hospital after a bite from an infected Assynt tick.

1. Remove tick within 24/48 hours. Do not squeeze. Easier said than done, but use good tweezers or borrow the tick remover (“Tick Twister”) from your dog/cat. A long right thumb-nail works well (twist anticlockwise and don’t pull). NEVER cover with Vaseline. Disinfect the bite site.
2. If you experience any of the symptoms below, seek medical attention. Antibiotics should work in the early stages of disease. Symptoms can vary from the classic bulls eye red ring (Erythema migrans), blistering, or just a bit inflamed. Feeling debilitated can also be a sign.
3. Put DEET insect repellent on skin (particularly round ankles, wrists) and on clothing. Re-apply.
4. Tuck Long trousers into stockings and long sleeved shirts. The tan is just not worth it.
5. Avoid high bracken, keep to the path. Hah! No rock exposures on the path. Advice from some Forestry guys is never to be the first in line!
6. Women should invest in a Shewee – comes in 3 different colours! Essential for bracken and heather-clad hillsides where the ticks are lying in wait for you!
7. Take clothes off carefully (after the field trip) and if possible tumble-dry or at least shake outside. Ticks survive for days hiding in corners. Tests have shown ticks survive a full wash and short drying cycle.
8. Check for ticks in your hair. A red ring round one’s head as suffered by a Member’s grandchild can be un-nerving!
9. Have a (very) good friend who will help with the tick hunt. Not just on that evening but a couple of days later. Ticks can hide in all sorts of places (see hair above), specially nooks and crannies.
10. If a number of very small ticks, use sticky tape to capture them. Do not be fooled, these wee ones, once attached and feeding off you can become BIG and infectious!

Seonaid Leishman (and friends)

For further information about ticks and Lyme Disease, see NHS Choices at <http://www.nhs.uk/conditions/lyme-disease/pages/introduction.aspx>

Notices:

Subscriptions & Membership:

We give a reminder that, unfortunately, the annual membership fees for the Society are being increased for the new Session (157) that begins 1st October 2014. This is due to the increasing costs being incurred by the Society in lecture room hire, postage and website fees. The new rates will be as follows.

Ordinary Membership	£25	Includes Scottish Journal of Geology
Associate Membership	£12.50	Eligible to those over 60, or spouses of Ordinary Members, or members of the Edinburgh Geological Society.
Junior Membership	£6.25	Eligible to those under 25, full time undergraduates, or recent (4 years) graduates. Scottish Journal of Geology is available on payment of a £6.25 supplement.

If you currently pay by **Bankers Standing Order** please amend your order with your bank. If you use electronic banking you can, if you wish, update your standing order on-line. Alternatively you can complete the form provided with this newsletter (last page) and post it to or take it into your bank to arrange for your standing order to be updated. We would be grateful if members set up the required amendments to their standing orders promptly so we can avoid the administrative burden of chasing up those who have overlooked to do so after we have started the next Session in October/November.

Those who customarily pay by cheque can send a cheque payable to the Geological Society of Glasgow at the address below. Those who currently do not pay by standing order but wish to start doing so can e-mail the Membership Secretary at the address below to request the appropriate form for set up of a standing order.

Dr. R A Painter, Membership Secretary, Geological Society of Glasgow,
e-mail: gsgmemsec@ntlworld.com. *If you need to send anything by post (e.g. cheques for membership fees) please request the postal address for membership business in your e-mail enquiry.*

New Members

We extend a warm welcome to the following new members:-

Mr S Jess	Glasgow
Miss H Robinson	Renton

Scottish Journal of Geology:

This is a reminder that Geology Society of Glasgow members who are eligible to receive the paper version of the Scottish Journal of Geology now have free online access to the full content of the journal, including back issues, via the Lyell Collection. Full details about access can be found in Newsletter 156/2 (available from the GSG website). If you have any problems with access to the Lyell Collection, please contact the Hon. Secretary, Simon Cuthbert.

Bookshop:

The Society's bookshop stocks a large selection of geology-related books, maps and pamphlets. It is open to browse and make purchases after the winter lecture meetings. Selected titles are listed in the Society website (<http://www.geologyglasgow.org.uk/bookshop/bookshop/>). Most of the books in this list can also be purchased from Amazon.co.uk through the website's customised Amazon bookshop. If you want to purchase a book that is not on the list, or any other item that Amazon sell, you can help the Society by making your purchase from the Amazon home page using the link from the Bookshop page. The Geological Society of Glasgow is a participant in the Amazon EU Associates Programme, an affiliate advertising programme designed to provide a means for sites to earn advertising fees by advertising and linking to Amazon.co.uk. Each purchase that takes place through the customised Amazon bookshop or the link to the Amazon home page generates a commission of approximately 5% of the sale price (excluding VAT) for the society. Further information is available from GSG Council Member Bill Gray (books@gsocg.org).

Proceedings of the Geological Society of Glasgow:

Members will know that many people contribute excellent field trip reports, together with great photographs, for inclusion in the Society's annual 'Proceedings'. These trip reports can also be viewed on the website with the photographs in colour. They are to be found at <http://geologyglasgow.org.uk/excursions/excursion-reports/>. Please have a look and enjoy the photographs in their full glory.

Mina Cummings (Proceedings editor)

Events from other geological societies:

Edinburgh Geological Society

For information about the lecture and excursion programme see <http://www.edinburghgeolsoc.org> and for the summer excursion programme see http://www.edinburghgeolsoc.org/x_home.html

Aberdeen Geological Society

<http://www.aberdeengeolsoc.org.uk/>

24th April: Jan Zalasiewicz (University of Leicester) *The Anthropocene: A new geological era?*

15th May: *Annual General Meeting, Rock Auction and Member Travelogues.*

For summer field excursions see http://www.aberdeengeolsoc.org.uk/fieldtrips/field_trips.html

Highland Geological Society:

<http://www.spanglefish.com/highlandgeologicalsociety/index.asp>

For summer field trips see

<http://www.spanglefish.com/highlandgeologicalsociety/index.asp?pageid=405568>

Westmorland Geological Society:

<http://www.westmorlandgeolsoc.co.uk>

For summer field excursions see <http://s3.spanglefish.com/s/22263/documents/pdfs/summer-programme-2014.pdf>

**Dr Simon J Cuthbert, Honorary Secretary, The Geological Society of Glasgow,
e-mail: contact@gsocg.org**

Geological Society of Glasgow
Members' Night Thursday 15th May 2014:
Request to contribute

Please use this form or email the following information to the Hon. Secretary

Title of contribution:

Name

Address
.....
.....

Telephone/Fax/email

Please complete the details below:

I wish to make a presentation as follows (please tick box as appropriate):

- Oral presentation with Powerpoint or Prezi slideshow or overhead projector
- Bench-top display
- Wall-mounted poster
- Lap-top computer "kiosk"-style slideshow (member's own laptop)

Please Note: Oral presentation speakers are requested to keep their talks to a **maximum** of 15 minutes *including* question time. In the event that more than four requests are received for oral presentations GSG Council will select those to be included in the programme; successful requests will be informed by e-mail or post by 1st May.

Please return this form by *Thursday 18th April* to:
Dr Simon J Cuthbert, Honorary Secretary,
The Geological Society of Glasgow,
email: contact@gsocg.org

GEOLOGICAL SOCIETY OF GLASGOW
STANDING ORDER AMENDMENT FORM

Standing Order for Annual Membership

Subscription Renewals from

(write your name [in block capitals] on dotted line above)

This is an instruction to your bank to amend an existing a standing order to the Geological Society of Glasgow to reflect the increase in subscription fees due from 1st October 2014.

Please pay to:

Geological Society of Glasgow,
Royal Bank of Scotland,

(GSG account details are as per the existing standing order with your bank.)

(Your bank will already have the GSG account details for your existing order.)

the amount indicated below:- *(please tick **one** of the boxes below)*

() £ 25.00 Ordinary Membership Subscription

() £ 12.50 Associate Membership Subscription

The first payment is to be made on 1st October 2014 or on receipt of this instruction whichever is the later and a like amount on the 1st October in subsequent years, until further notice.

To the Manager (your bank)

..... (bank address)

.....

.....

..... (bank sort code)

..... (account number)

..... (account name)

..... (signature and date)

Please complete this form and send it to your bank by post

or in person at the bank counter